



Release v1.0

Milgard is excited to release the first version of CTB Quote Plus to Pilot dealers! This is an internet based quoting solution that Milgard has been developing for over two years. We began by meeting with Dealers, Inside Sales Reps and Outside Sales Reps to understand what users' need and want in a quoting program. We continued to solicit input throughout development and testing. Our goal has always been to ensure CTB Quote Plus is a valued tool for your business that provides a strong MVP for all internal and external customers.

Contents

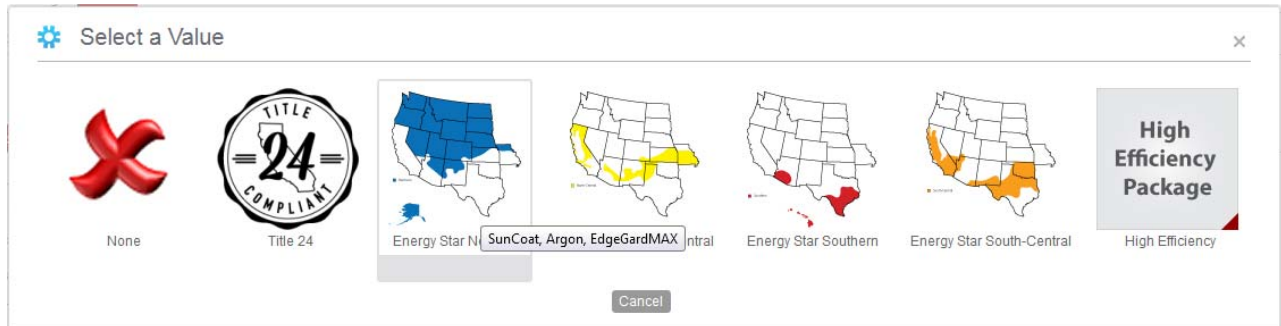
Release v1.0	1
Key Release Feature – New Options	3
Added 2015 Energy Packages	3
Added SmartTouch Bolt to Tuscany and Montecito Sliding Doors 3296ECN	3
Added 2 ½” vinyl Check Rail to Tuscany and Montecito 3213ECN	3
Key Release Feature – New Functionality.....	4
Added Change Log	4
Added Proofing Report	4
Added Infolinks and Tooltips	4
Added Customizable bid documents	5
Added Helpdesk Support	6
Added Resources on Home page	6
Added Custom Glass or Grids	7
Added Library.....	7
Added Projects.....	7
Added Attachments	8
Special Configurations – Composite Design.....	8
Key Release Feature – Engineering.....	9
Remove WOCD option on Styleline sliding windows with Wall Conditions 3850ECN	9
Correct Tuscany and Montecito Sliding Door clear opening 3701ECN.....	9

Correct Essence Double Hung clear opening 4057ECN	9
Key Release Feature – Portland	9
Added 4 th Surface HP Coating to triple glaze 3195ECN	9
Added WUIBS tempered option 4031ECN.....	9
Added Aluminum screen mesh.....	9

Key Release Feature – New Options

Added 2015 Energy Packages

Available packages vary by location -Hover over the image to see the glass components that make up the package



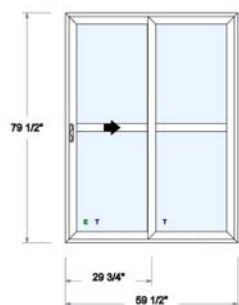
Added SmartTouch Bolt to Tuscany and Montecito Sliding Doors 3296ECN

Milgard introduced a secondary lock for patio doors --- an industry first. SmartTouch® Bolt is a fully integrated steel bolt that secures the sliding patio door firmly into the top frame with the flip of a lever. As an added benefit, SmartTouch Bolt can let the fresh air in while keeping the door secure in a vented position. SmartTouch® Bolt is currently available on Tuscany® Series and Montecito® Series sliding patio doors.



Added 2 ½" vinyl Check Rail to Tuscany and Montecito 3213ECN

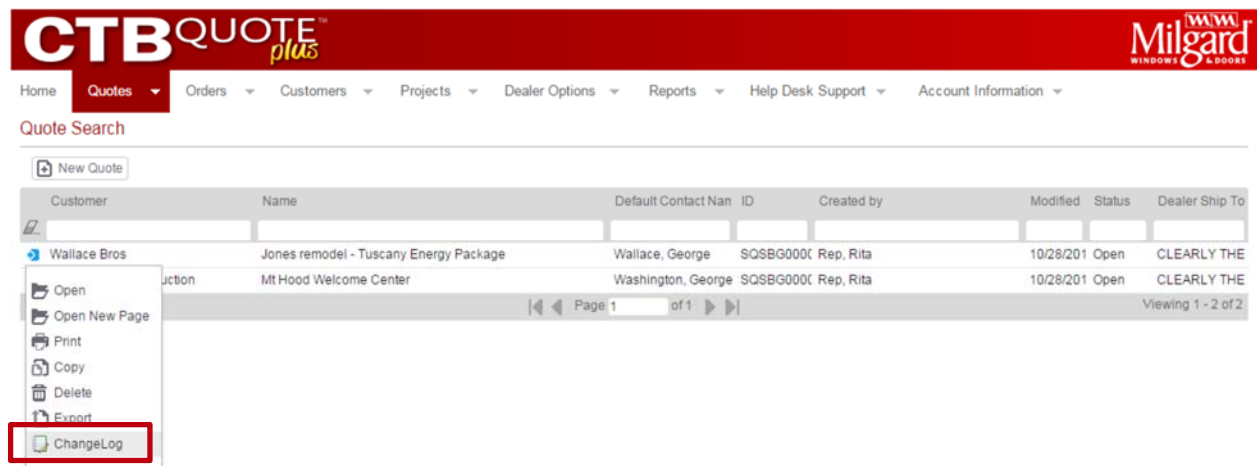
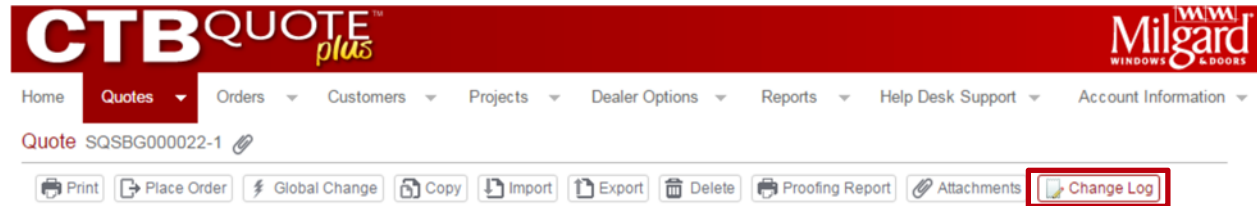
Simulated divided lite bar now available in some models



Key Release Feature – New Functionality

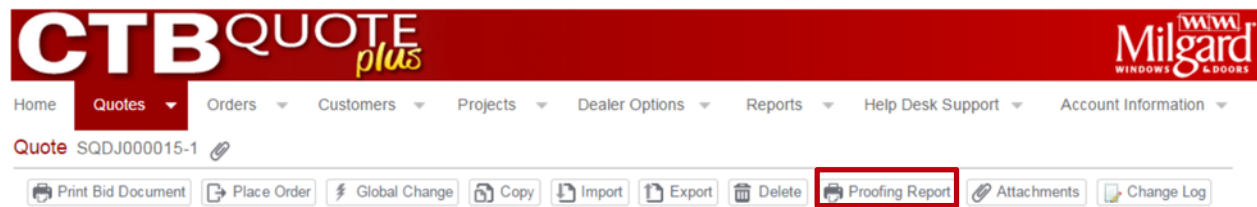
Added Change Log

CTB Quote™ Plus offers the **Change Log** as an audit trail for Quote activities. Logged entry types include Adds, Copy, Edits, and Deletes to *Shopping Cart* Line Items. Additional **Change Log** entries are price adjustments, project linking, and comments.



Added Proofing Report

The **Proofing Report** button provides the ability to review all **Line Item** details for configured **Items** in the *Shopping Cart*. Details include ratings and specifications in a format that makes it easy to identify accuracy.



Added Infolinks and Tooltips

Info Links are identifiable by the italic letter *i* icon next to the field name in the **Line Item Configurator**. More information is available for any field where the italic *i* icon is located.

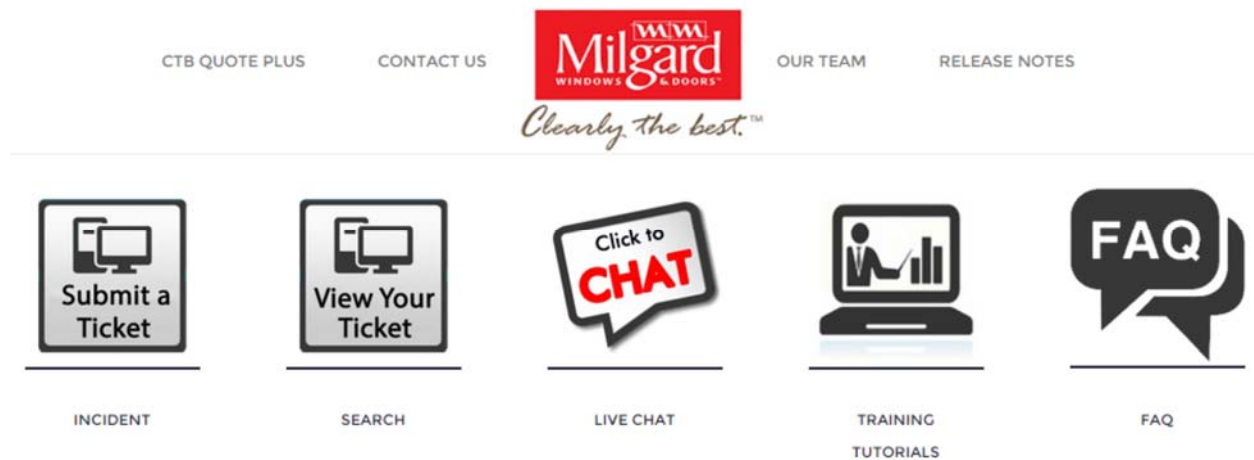
Tool Tips are found on field names formatted with an underline and styled red.

Added Customizable bid documents

Nine bid document layouts can be customized on a quote by quote basis using the checkboxes shown below.

Added Helpdesk Support

The **Support Portal** for **CTB Quote™ Plus** is easily accessed from the **Navigation Ribbon > Help Desk Support** or from the **Home Page Tile**.



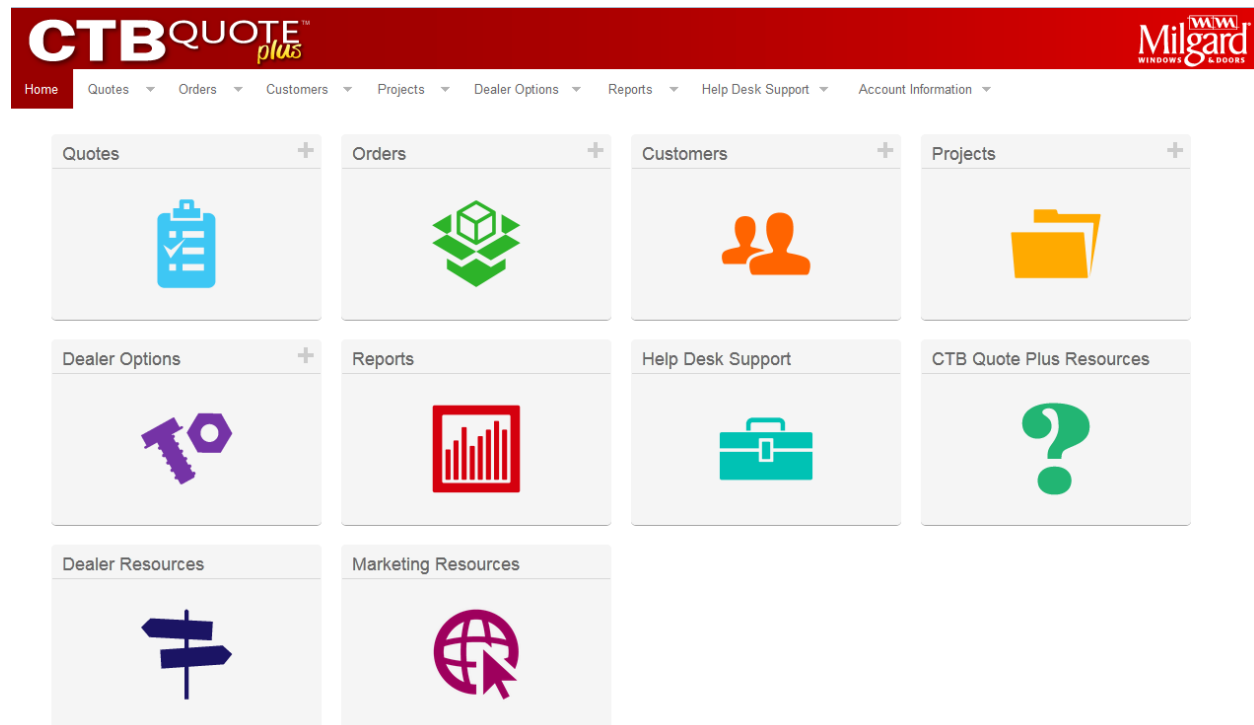
Added Resources on Home page

From the **Home page** you have access to:

CTB Quote™ Plus Resources – training guides, tutorial videos, FAQ

Dealer Resources – Milgard forms such as HEP approval, Garden Window cut sheet, etc.

Marketing Resources – Milgard brochures



Added Custom Glass or Grids

Customized Lites can be built within **CTB Quote™ Plus** to accommodate a wide range of glass and grid design requirements. See **CTB Quote™ Plus Resources** *Customize Glass-by-Lite* and *Customize-Grids-by-Lite* for instructions.

Added Library

Quote Library Items can save time by having preconfigured *Shopping Cart Items* available for reuse on **Quotes**. A common-use scenario is that certain **Window** or **Door** options are sold more frequently; add these popular **Line Items** to the **Library** to have the **Item** easily available to add to new or existing **Quotes**.

The screenshot shows the CTBQUOTE plus web application interface. The top navigation bar includes Home, Quotes, Orders, Customers, Projects, Dealer Options, Reports, Help Desk Support, and Account Information. The main content area is titled "Quote SQDJ000040-1" and features a toolbar with buttons for Print Bid Document, Place Order, Global Change, Copy, Import, Export, Delete, Proofing Report, Attachments, and Change Log. Below the toolbar, there are input fields for Location (Milgard Test Dealer Loc 1), Customer (Select a Customer...), Quote Name (Northwind Bldg 300), and Version (1). The "Items" tab is selected, showing an "Item Selection" section with fields for Item (Select an item...), Quantity (1), Description, and Location/Label. At the bottom, there are buttons for Library, Write-In Dealer Options, and Product Catalog.

Added Projects

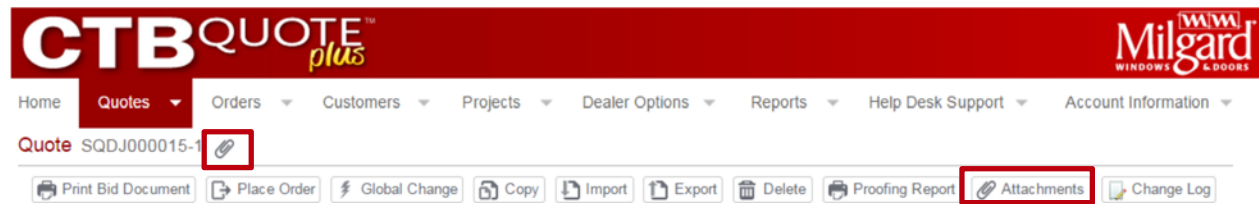
Projects provide the option to organize **Quotes** for a **Customer**. Several **Quotes** can be associated under the same **Project** with a folder style hierarchy.

The screenshot shows the CTBQUOTE plus web application interface with the "Projects" tab selected. The "Project Search" section includes a "New Project" button and a table listing projects. The table has columns for Name, Customer, Last Modified by, and Modified on. Below the table, there are navigation controls for "Page 1 of 1" and "Viewing 1 - 8 of 8". A context menu is open over the table, showing options for Open, Copy, and Delete.

Name	Customer	Last Modified by	Modified on
Project for John Smith	Joe Customer	Dealerrep, John	6/23/2015
Joe's Apt - Bldg 1 East	Joe Customer	Dealerrep, John	6/23/2015
Joe's Apt - Bldg 2- West	Joe Customer	Dealerrep, John	6/11/2015
Northwind Remodels	North Apartments	Dealerrep, John	5/12/2015
Unit 1-A	North Apartments	Dealerrep, John	6/23/2015
Unit 1-B	North Apartments	Dealerrep, John	6/23/2015
Washington Welcome Centers	Washington Construction	Dealerrep, John	6/15/2015
Ranier Welcome Center	Washington Construction	Dealerrep, John	6/23/2015

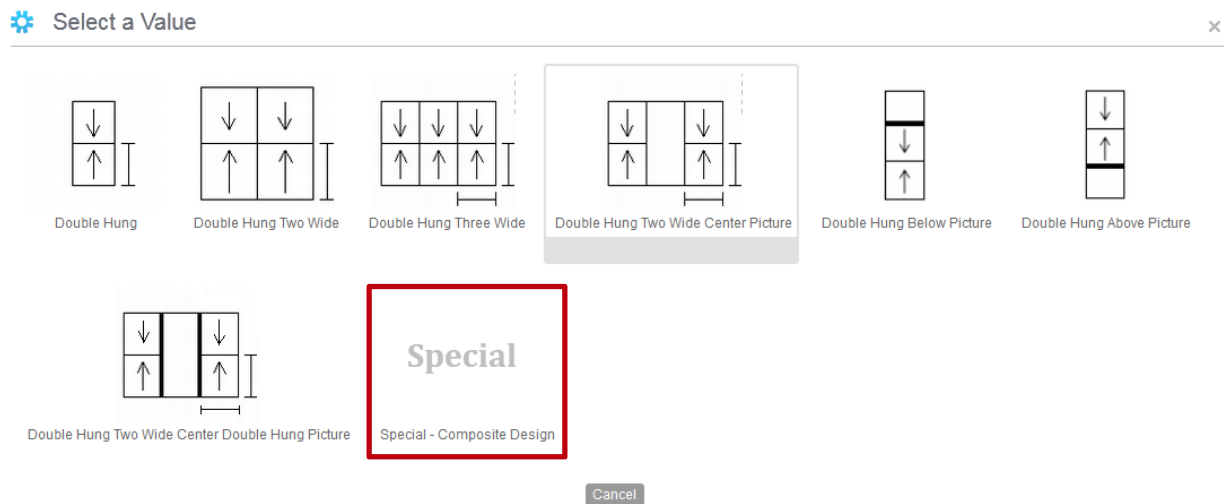
Added Attachments

One or more files can be attached to **Quotes**. File attachments can be added at the *Header* level or at the individual *Line Item* level.



Special Configurations – Composite Design

Special Composite Design is an option for customized builds. The most common builds are preconfigured within **CTB Quote™ Plus**, however, if the required build is not listed, special configurations are possible within the application. See **CTB Quote™ Plus Resources Building Composite Design or Mulled Windows** for instructions.



Key Release Feature – Engineering

Remove WOCD option on Styleline sliding windows with Wall Conditions 3850ECN

Correct Tuscan and Montecito Sliding Door clear opening 3701ECN

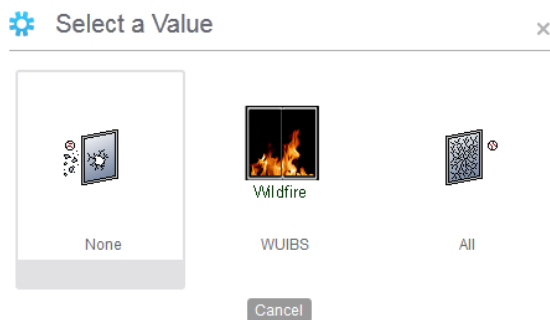
Correct Essence Double Hung clear opening 4057ECN

Key Release Feature – Portland

Added 4th Surface HP Coating to triple glaze 3195ECN

4th Surface HP Coating is available as an Inner Glass Type option on triple glazed units when the Outer Glass Type is SunCoat (Low-E) or Cardinal 180 (Low-E).

Added WUIBS tempered option 4031ECN



Added Aluminum screen mesh

